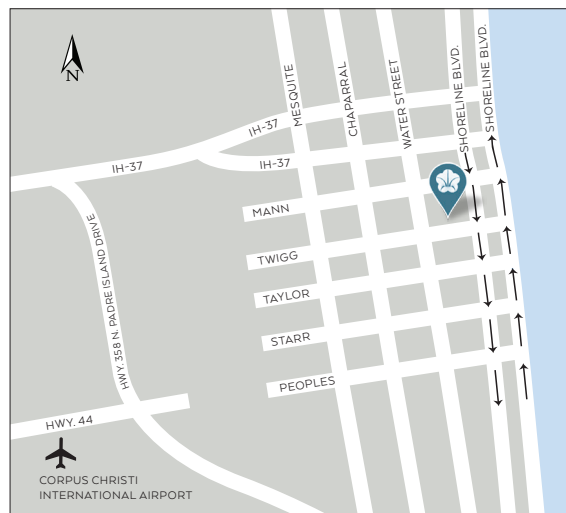


DISTINCTIVE DETAILS



DIRECTIONS

From Corpus Christi International Airport:
go east on Highway 44 to 358 North;
right onto IH-37 to Shoreline Boulevard;
right on Shoreline Boulevard; hotel
is located on the right.

900 NORTH SHORELINE BOULEVARD, CORPUS CHRISTI, TX 78401 • 361-887-1600 • FAX: 361-886-3565

VISIT OUR WEBSITE AT OMNIHOTELS.COM/CORPUSCHRISTI • GLOBAL SALES OFFICE NETWORK: 800-788-OMNI (6664)

OMNI  HOTELS & RESORTS
corpus christi | texas

DESTINATION

Located in the downtown Marina District, Omni Corpus Christi Hotel is situated in the midst of 131 miles of sandy beaches, year-round sailing, swimming, deep-sea fishing, antique shopping, downtown nightlife and a variety of attractions. Omni Corpus Christi Hotel features 475 guest rooms and more than 23,000 square feet of flexible event space.

LOCATION

- Conveniently located downtown in the Marina District, just minutes from several area attractions.
- Omni Corpus Christi Hotel overlooks the beautiful Corpus Christi Bay. Guests will enjoy the bay's warm waters and beautiful sunrises.
- Corpus Christi is 141 miles from the Texas/Mexico border and within driving distance of several major cities in Texas: 144 miles from San Antonio, 215 miles from Houston, 218 miles from Austin and 230 miles from Galveston.
- 2 blocks to the exciting nightlife of downtown. A variety of restaurants and clubs offer excellent dining options, music and entertainment for everyone.
- 5 blocks to the American Bank Convention Center, which offers 200,000 square feet of meeting and exhibit space.
- 1 mile to the Port of Corpus Christi, which is the fifth largest port in the United States and the engine that drives the South Texas economy.
- 30 minutes to Padre Island National Seashore, the largest undeveloped barrier island in the continental United States, boasting more than 131 miles of sandy beaches.

ATTRACTIONS

- Omni Corpus Christi Hotel is located across the street from year-round sailing, bay fishing and other outdoor venues.
- 3 miles to the Texas State Aquarium, the official aquarium of Texas houses many marine life displays and programs for all ages.
- 3 miles to the USS Lexington Aircraft Carrier and Museum. The USS Lexington, nicknamed "The Blue Ghost," served longer and set more records than any other ship in naval history.
- 3 miles to scenic Ocean Drive, which showcases some of the most beautiful homes in the city.
- 1 mile to the Harbor Playhouse. One of the oldest theatres in Texas, the Harbor Playhouse hosts musicals, dramas, comedies, children's shows and summer melodramas.
- 1 mile to the Art Museum of South Texas.
- 1 mile to the World of Discovery/ Museum of Science and History.
- 1 mile to Hurricane Alley Water Park.
- 1 mile to Whataburger Field, home of the Corpus Christi Hooks, Double A Minor League Affiliate of the Houston Astros.

TEMPERATURE

- Mild semi-tropical climate and warm waters create a year-round outdoor paradise. The average temperature for Corpus Christi is 72 degrees.
- More than 500 different birds migrate to Corpus Christi during the winter months due to its warm weather.

MONTH	HIGH	LOW
JANUARY	67°F	46°F
FEBRUARY	70°F	49°F
MARCH	76°F	56°F
APRIL	82°F	64°F
MAY	87°F	70°F
JUNE	91°F	74°F
JULY	94°F	76°F
AUGUST	94°F	76°F
SEPTEMBER	90°F	73°F
OCTOBER	84°F	64°F
NOVEMBER	75°F	65°F
DECEMBER	69°F	49°F

TRANSPORTATION

- Omni Corpus Christi Hotel provides complimentary shuttle service to and from the Corpus Christi International Airport.
- Car rentals – National, Alamo, Avis, Thrifty, Enterprise, Hertz, and Dollar – service the area.
- The Corpus Christi Airport is just 12 minutes from the hotel and features full jet service.
- Covered parking is available, with additional uncovered parking for buses and vehicles.
- Valet parking is available for a nominal fee.

GUEST SERVICES

GUEST SERVICES

- Morsel's offers everything from coffee, pastries and sandwiches to a variety of gifts and sundries.
- Same-day dry cleaning, weekdays only
- Safe deposit box in each guest room
- In-house salon
- Full-service audiovisual department
- Automated business center

IN-ROOM TECHNOLOGY

- On-demand hit movies
- High-speed Internet access
- Express check-out via TV

IN-ROOM AMENITIES

- Evening turndown service, upon request
- Hair dryers
- Iron and ironing board
- Terrycloth robes
- Complimentary newspapers delivered to your room upon request

BUSINESS CENTER

Most services are available through the front desk or business center during regular business hours Monday through Friday. Services include:

- Internet access
- Photocopying and faxing

OMNI SENSATIONAL KIDS PROGRAM

- Backpacks are available for kids to take to their room, filled with fun activities.
- Milk and cookies on the night of arrival
- A list of the top family attractions located near the hotel
- Activity book and bright crayons
- Kid-themed menus in the restaurant
- Kid's cup with unlimited refills to use throughout their hotel stay
- Omni Hotels can provide outlet covers and a kid's first-aid kit for security and safety.

VIP GIFTS

Our staff is well-versed in the selection of amenities for VIP guests and would be happy to make customized arrangements prior to the arrival of your guest. You may also purchase an Omni Hotels & Resorts gift card, a luxurious gift for those who appreciate first-class service. For more information, please contact the concierge.

SELECT GUEST

As part of our commitment to providing memorable experiences all over the world, Omni Hotels & Resorts is proud to offer our Select Guest® loyalty program and the DISCOVERY loyalty program. Membership is complimentary. Enjoy complimentary perks, earn free nights, experience stay well amenities and benefit from exclusive offers. To learn more, visit OmniHotels.com/Loyalty.

RECREATION

- Heated swimming pool, whirlpool and dry sauna
- Indoor racquetball courts

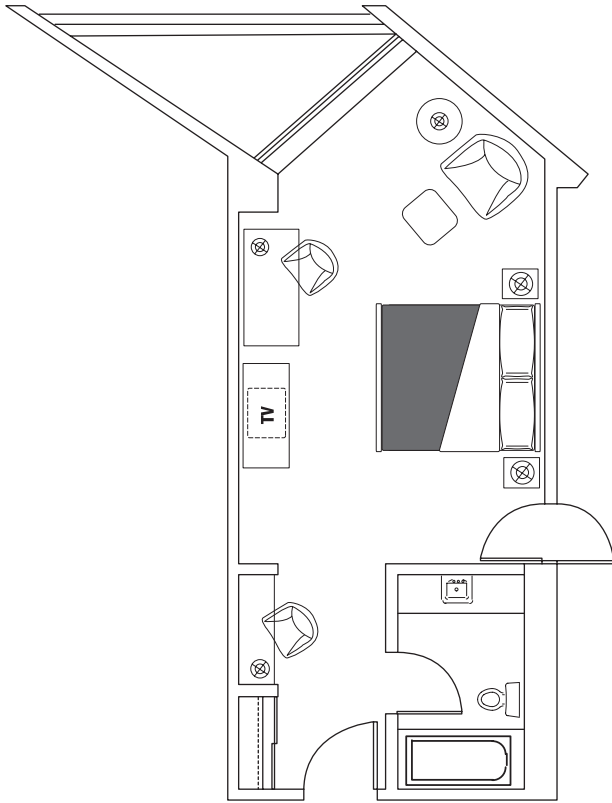
FITNESS CENTER

- A fully-equipped fitness center with state-of-the-art equipment including weights and cardio equipment
- Locker room and changing area located near the fitness center

OFF-SITE RECREATION

- Experience the beauty of the bay while jogging along the seawall on the beautiful four-mile path, located across from the hotel.
- The hotel is 1 mile from McGee Beach. Enjoy a swim in the warm waters of the Corpus Christi Bay.
- Sailing, bay fishing, horseback riding on the beach and a variety of other year-round water sports
- Golf and tennis facilities are located nearby.

ACCOMMODATIONS



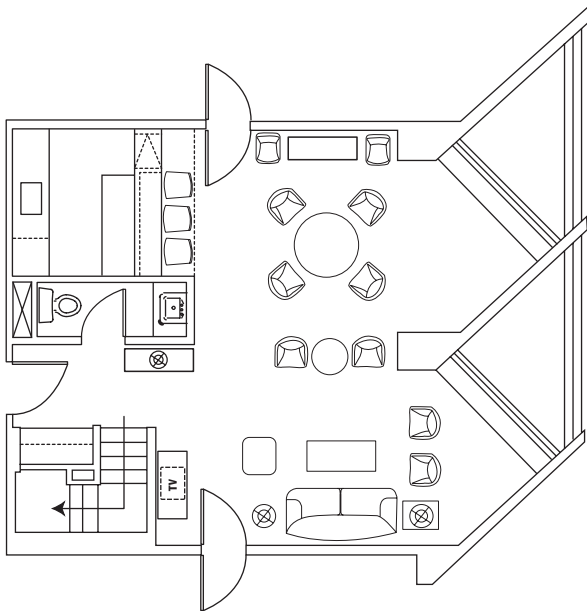
STANDARD DELUXE
KING ROOM

GUEST ROOMS

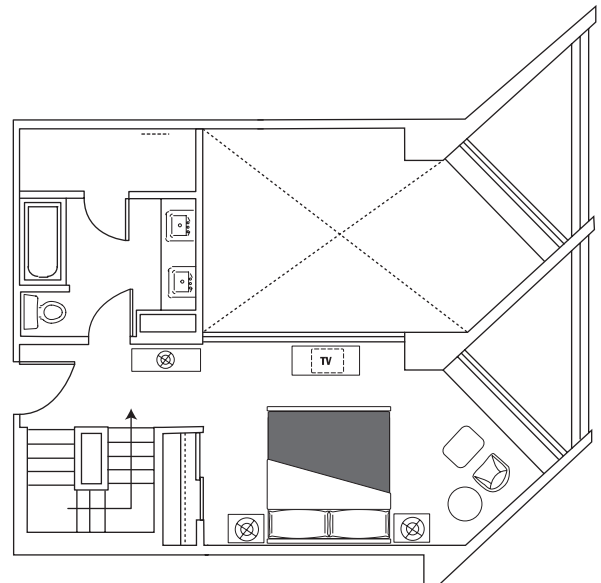
With stunning views of the Corpus Christi Bay, each one of our 475 deluxe guest rooms and suites exudes a relaxed, coastal chic décor.

SUITES

Omni Corpus Christi Hotel presents a variety of grand accommodations. The bi-level Presidential Suite offers two floors of luxury including a private dry sauna. The Omni Suite's distinctive layout and special features offer a unique experience for guests.



1ST FLOOR



2ND FLOOR

PRESIDENTIAL SUITE

ACCOMMODATIONS

GUEST ROOMS

ROOM CATEGORY	NUMBER	SQUARE FEET	SPECIAL FEATURES
Standard Deluxe	421	384	Variety of views are available based on availability. Equipped with either two double beds or one king bed and an executive size work station (king rooms only)
Standard Signature	25	384	Located on exclusive floor with wonderful views of Corpus Christi Bay. Upgraded features.
Executive Suite	13	566	Beautiful view of the USS Lexington Aircraft Carrier and Museum and Corpus Christi Bay, living area with a separate sleeping area
Omni Suite	1	700	Separate sleeping and living areas, automatic closet lights, wet bar with refrigerator and microwave, two large balconies overlooking the bay
Corpus Christi Suite	1	864	Large living and dining area, king sleeping room, double-door entryway, separate study, dining area that comfortably seats six
Bayview Suite	12	875	Spectacular views of the Corpus Christi Bay, two sitting areas with chairs, a couch, wet bar, king bed
Presidential Suite	1	1320	Bi-level suite with entry on 18th floor, private sauna, large dining area, a buffet and separate wet bar
Ambassador Suite	1	1617	Located on the 18th floor with breathtaking views of the Corpus Christi Bay, four large balconies, separate dining area that comfortably seats six, with the option of two connecting rooms

All guest rooms are equipped with a flat-screen television, iron and ironing board, terrycloth robes, easy chair, hair dryer, in-room safe, mini-fridge, voicemail, two-line phone and high-speed Internet access.

CONFERENCE SPECIFICATIONS

TECHNICAL ASSISTANCE

Our on-site audiovisual department offers state-of-the-art technology to ensure the success of your meeting.

Equipment available for rental includes overhead projectors, LCD projectors, video cameras and players, laptops, microphones, mixers, amplifiers and more. Standard 110v outlets are available in all rooms. Upon request, up to 100 amps three-phase 208v electrical outlets can be placed into the rooms.

RECEIVING DOCKS

- The receiving docks are located on the west side of the hotel.
- Two loading areas are available for large trucks.
- The loading dock is accessible to a large freight elevator.

MAINTENANCE

- An engineer is available for assistance in the function rooms, upon request.
- Hotel personnel will gladly hang any items for your function. For your safety and convenience, please notify an engineer for assistance.
- When shipping cartons, please include conference name and date, name of individual receiving package(s), group contact and number of boxes shipped.
- Hotel personnel will gladly discuss prices regarding hotel package fees.

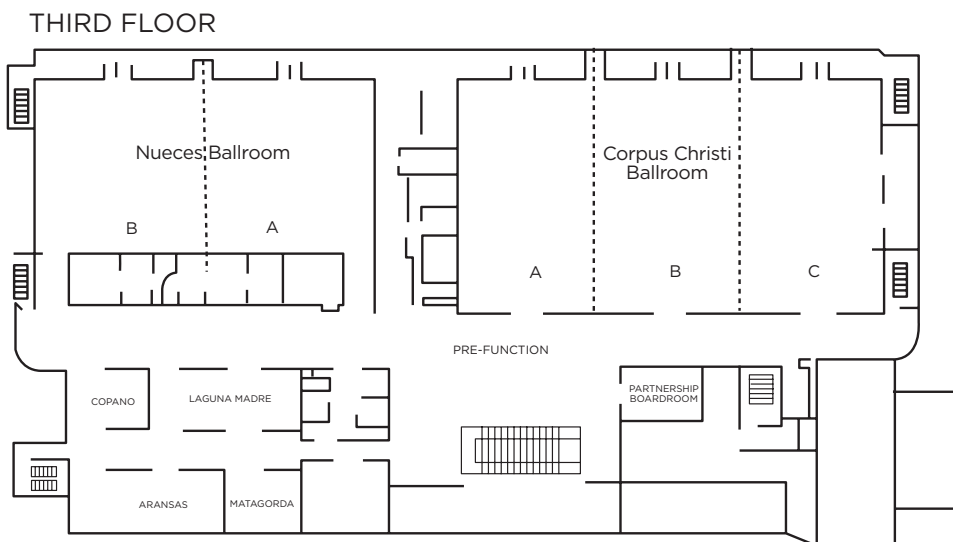
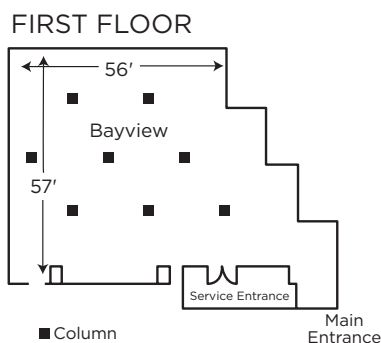
POST-CONFERENCE SHIPPING

- Omni Corpus Christi Hotel can ship any materials that are left behind, up to three business days after the conference ends. All shipping charges will be billed to the guest.

MUSIC AND ENTERTAINMENT

Omni Corpus Christi Hotel has an on-going agreement with several music and entertainment companies. Please contact the convention services manager or catering manager for more information.

CONFERENCE SPECIFICATIONS



FACILITIES

- Omni Corpus Christi Hotel boasts more than 23,000 square feet of flexible meeting and banquet space divided among our ballrooms, executive boardroom and 11 function rooms.
- The beautiful 10,050-square-foot Corpus Christi Ballroom provides a scenic view of the bay and can be separated into three sections.
- A full staff of managers within our sales, convention services and catering departments are available to attend to special details.

	SQUARE FOOTAGE	DIMENSIONS	CEILING HEIGHT	PORTABLE WALLS	WINDOWS	THEATER	CLASSROOM 18"	CLASSROOM 30"	BANQUET 66"	RECEPTION	HOLLOW SQUARE	CONFERENCE
CORPUS CHRISTI BALLROOM	10,050	134' x 75'	16'	YES	YES	1,111	690	570	900	1,053	—	—
BALLROOM A	3,300	44' x 75'	16'	YES	NO	366	228	189	240	347	60	60
BALLROOM B	3,525	47' x 75'	16'	YES	NO	388	240	198	240	368	60	60
BALLROOM C	3,225	43' x 75'	16'	YES	YES	355	219	183	240	337	60	60
NUECES BALLROOM	6,260	58' x 108'	16'	YES	YES	711	441	363	500	674	—	—
BALLROOM A	3,130	58' x 54'	16'	YES	NO	344	213	177	230	326	50	50
BALLROOM B	3,130	58' x 54'	16'	YES	YES	344	213	177	230	326	50	50
LAGUNA MADRE	930	19' x 49'	10'	NO	NO	105	66	54	80	100	35	35
ARANSAS	930	19' x 49'	10'	NO	YES	105	66	54	80	100	35	35
COPANO	455	19' x 24'	10'	NO	NO	50	32	24	40	47	12	12
MATAGORDA	455	19' x 24'	10'	NO	YES	50	32	24	40	47	12	12
PARTNERSHIP BOARDROOM	350	14' x 25'	10'	NO	NO	—	—	—	—	—	—	12
BAYVIEW	3,833	56' x 57'	10'	NO	YES	288	135	90	190	420	35	—

Meeting room capacities are determined by the use of the "Arranger and Comfort Calculator," a standardized meeting room capacity measurement system used by Meeting Professionals International.

FOOD & BEVERAGE

GLASS PAVILION RESTAURANT

Enjoy breakfast, lunch or dinner with a view of the bay. The Glass Pavilion Restaurant offers a wide variety of delicious delights, including steak, seafood and pasta. Located on the 2nd floor.

HOURS OF OPERATION MONDAY - SUNDAY:

BREAKFAST: 6:30-10:30 A.M.

LUNCH: 11 A.M.-2 P.M.

DINNER: 5-10 P.M.

GUEST ROOM DINING

Enjoy delicious cuisine in the privacy of your guest room.

HOURS OF OPERATION FOR LIMITED MENU:

MIDNIGHT-6 A.M.

REPUBLIC OF TEXAS BAR & GRILL

Diners will experience the finest in U.S.D.A. prime beef and a variety of seafood entrees while enjoying stunning panoramic views of the Corpus Christi Bay. This multi-level, top floor steakhouse is filled with delicious delights to satisfy all appetites. Reservations strongly recommended. Located on the 20th floor.

HOURS OF OPERATION MONDAY - SATURDAY:

DINNER: 5:30-10:30 P.M.

HOURS OF OPERATION SUNDAY:

DINNER: 5:30-9 P.M.

EXPLORE NATURE. ENJOY THE COAST. MAKE MEETINGS FUN.

TEAM BUILDING

Simply choose which type of outing would best engage your audience and our team will coordinate all the details.

- Fishing Excursion
- Bowling Tournament
- Sand Castle Competition
- Volleyball Round Robin
- Outdoor Education and Leadership Ropes Course
- Golf Challenge
- Skeet Shooting

AREA ADVENTURES

Discover all the best the Coastal Bend has to offer. Tour one of these area attractions for a day of exploration. These adventures are ideal for incentive trips or to give meeting attendees a reason to stay an extra day.

- King Ranch
- Fennessey Ranch
- South Texas Museum Tour
- Dolphin Watch
- Guided Bird Watching
- Horseback Riding on the Beach
- Segway Tours