

# OMNI

PGA FRISCO

MEETING & EVENT GUIDE







THE FUTURE  
OF GOLF, MEETINGS  
AND EVENTS HAS ARRIVED.

Located 30 miles north of downtown Dallas, Omni PGA Frisco Resort is the largest resort currently in development in the country. Guests can expect experiences that exude the local Texas flavor through authentic design, amenities and services. The resort will be a beacon for PGA Major Championship golf, instruction and play for golfers of all abilities. With 127,000 square feet of meeting and event space, Omni PGA Frisco Resort is the ideal location for your next event.





## ABOUT OMNI PGA FRISCO RESORT



WANAMAKER BALLROOM

### ARRIVING HERE IS ONLY THE BEGINNING OF YOUR JOURNEY

Omni PGA Frisco Resort is built on inspiration from modern ranch homes, embracing the wide open spaces for which Texas is known with floor-to-ceiling windows throughout. Don't let the name "PGA" fool you – this resort will be so much more than golf. An expansive retail and entertainment district will house dining, shopping and an outdoor stage, making the resort a true culinary, recreation, relaxation and meeting destination.



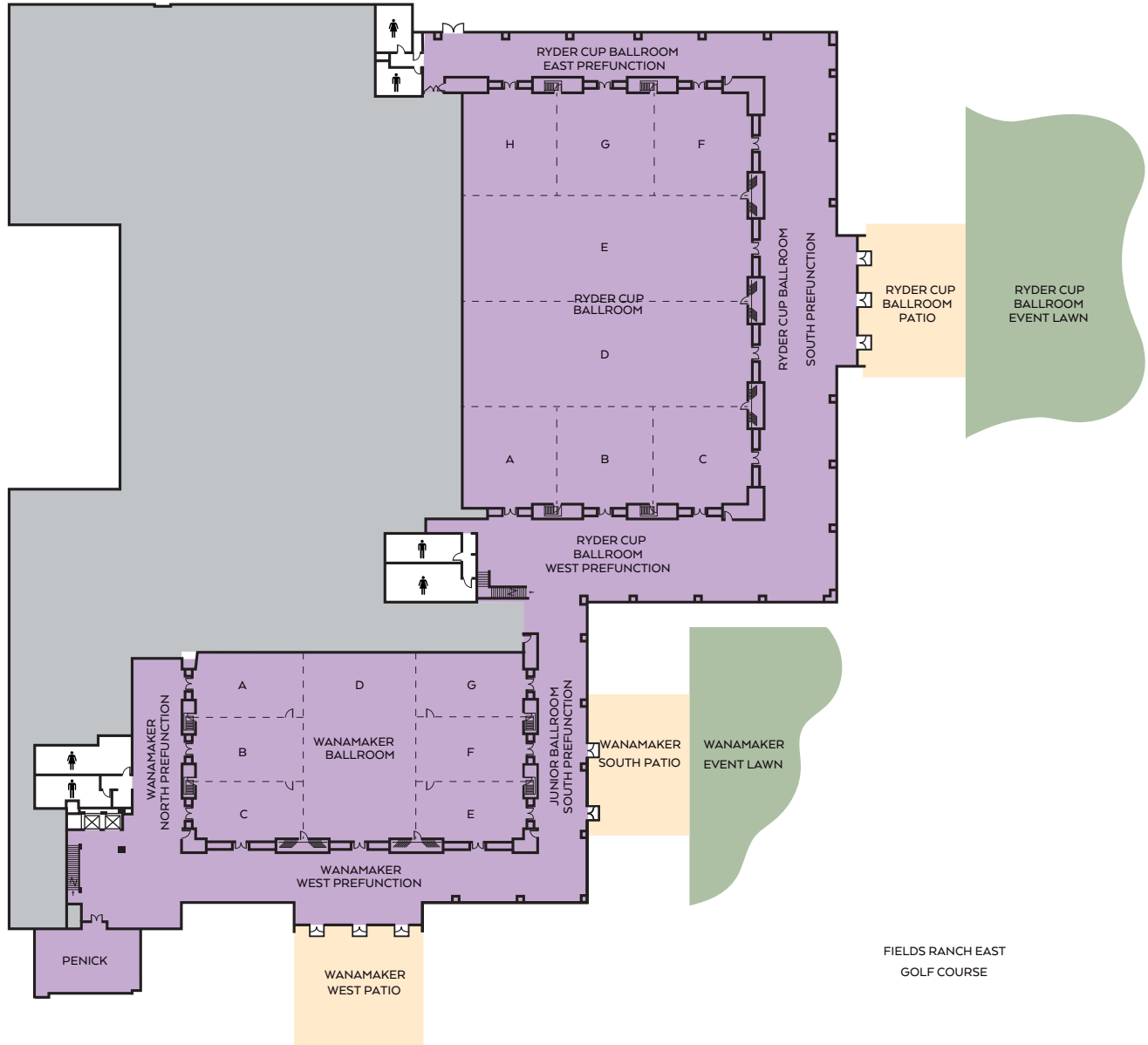
PAVILION

### AN EVENT TO REMEMBER

- 500 guest rooms and suites, plus 10 luxurious four-bedroom ranch houses
- Approximately 127,000 square feet of flexible indoor and outdoor meeting, event and pre-function space, including a 23,000-square-foot Ryder Cup Ballroom featuring an exclusive event lawn overlooking the golf courses
- On-site audiovisual equipment services offering the latest technology and Wi-Fi internet access
- 13 dining options including a lobby bar, all-day dining outlet with to-go offerings, signature specialty dining, coffee and ice cream shops and more
- Two 18-hole championship golf courses, a lighted 10-hole short course and two-acre putting green, Lounge by Topgolf, PGA Coaching Center and a practice facility anchored by a clubhouse and entertainment district
- 15,000-square-foot destination spa with 20 treatment rooms, cafe and private pool
- Family pool with splash pad and adults-only rooftop deck with an infinity pool
- 24-hour fitness center including Peloton®, Cybex and StairMaster® equipment

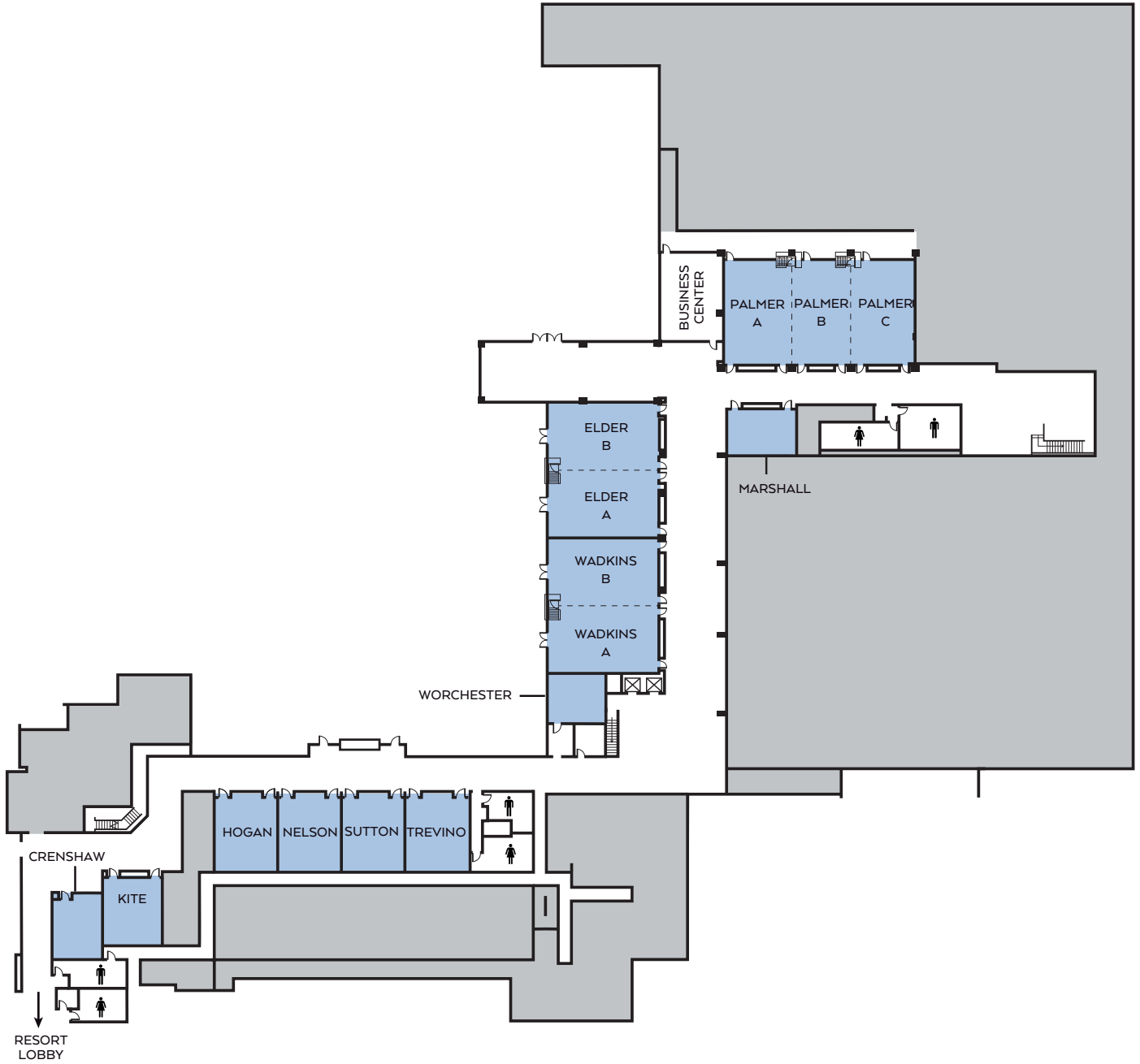
# OMNI PGA FRISCO RESORT MEETING SPACE

## BALLROOM LEVEL



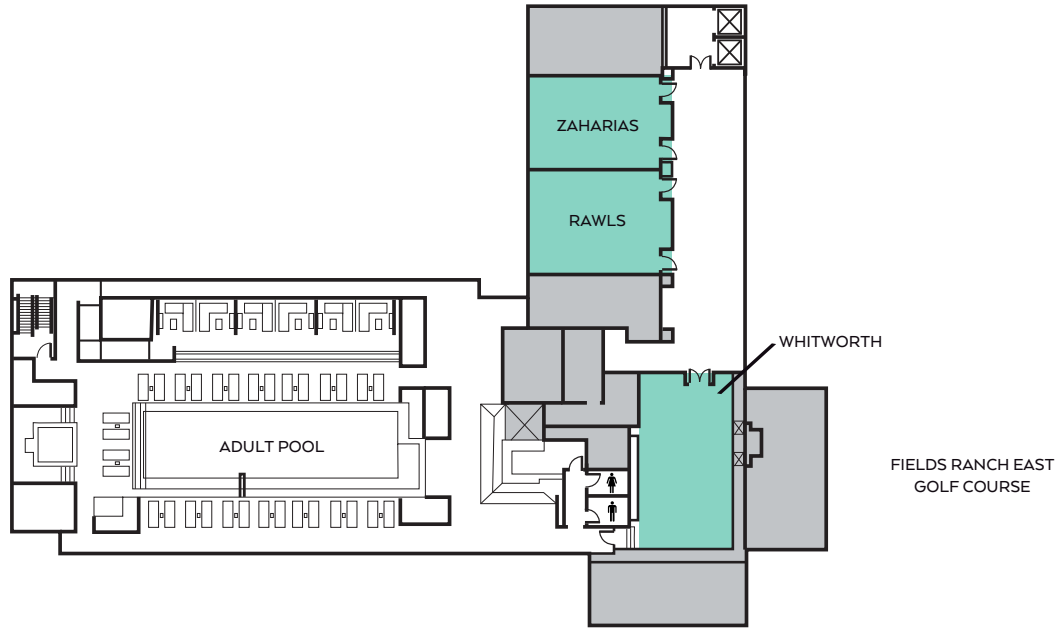
# OMNI PGA FRISCO RESORT MEETING SPACE

## LOBBY LEVEL

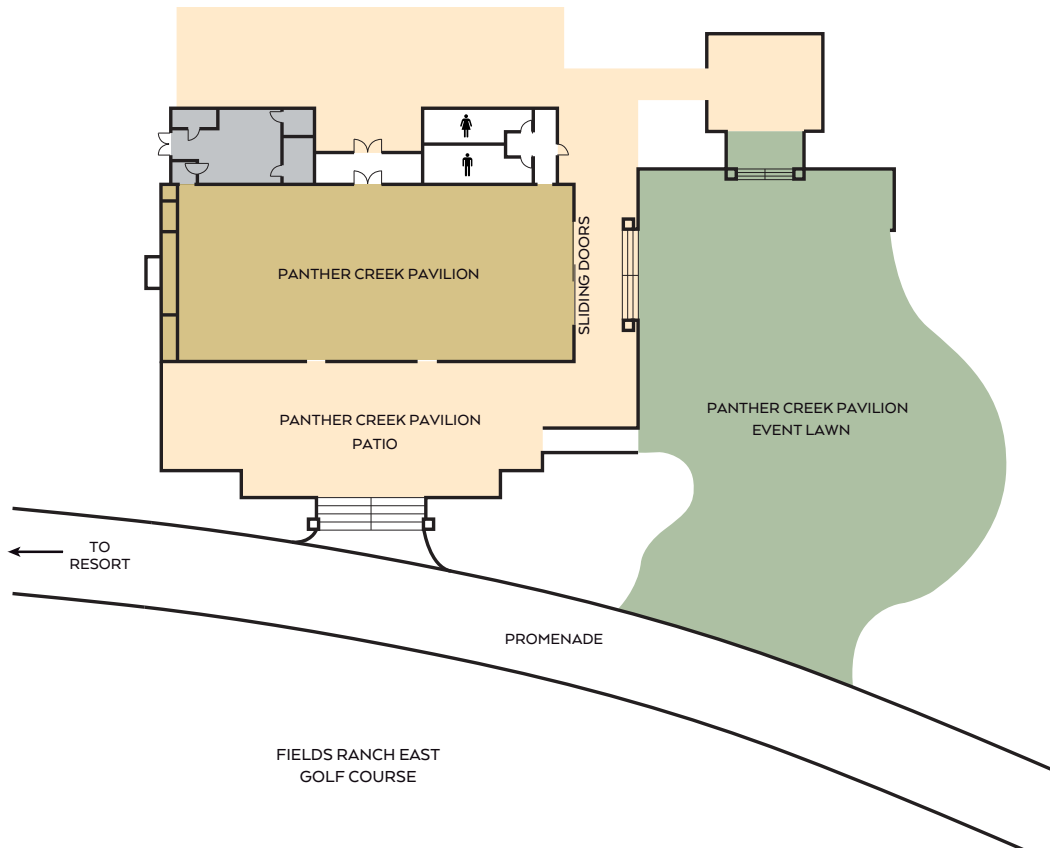


# OMNI PGA FRISCO RESORT MEETING SPACE

## SIXTH LEVEL



## PANTHER CREEK PAVILION



## OMNI PGA FRISCO RESORT MEETING ROOM CAPACITY

	DIMENSIONS L X W	SQUARE FOOTAGE	CEILING HEIGHT	THEATRE	CLASSROOM	RECEPTION	ROUNDS OF 10	CONFERENCE	U-SHAPE	HOLLOW- SQUARE
<b>BALLROOM LEVEL</b>										
<b>RYDER CUP BALLROOM</b>	<b>175' X 129'</b>	<b>22,264</b>	<b>24'</b>	<b>1,850</b>	<b>1,100</b>	<b>2,225</b>	<b>1,250</b>	-	-	-
RYDER CUP BALLROOM C	43' X 41'	1,742	24'	150	100	175	110	32	36	40
RYDER CUP BALLROOM B	43' X 42'	1,788	24'	150	100	180	110	32	36	40
RYDER CUP BALLROOM A	43' X 41'	1,760	24'	150	100	175	110	32	36	40
RYDER CUP BALLROOM D	125' X 46'	5,718	24'	580	330	570	360	-	-	-
RYDER CUP BALLROOM E	125' X 46'	5,718	24'	580	330	570	360	-	-	-
RYDER CUP BALLROOM F	45' X 41'	1,824	24'	160	100	180	120	32	36	40
RYDER CUP BALLROOM G	45' X 42'	1,872	24'	160	100	180	120	32	36	40
RYDER CUP BALLROOM H	45' X 41'	1,842	24'	160	100	180	120	32	36	40
RYDER CUP BALLROOM PREFUNCTION	-	16,399	15'	-	-	1,640	-	-	-	-
PREFUNCTION SOUTH	249' X 33'	8,896	15'	-	-	890	-	-	-	-
PREFUNCTION EAST	150' X 19'	2,875	15'	-	-	290	-	-	-	-
PREFUNCTION WEST	156' X 36'	4,628	15'	-	-	460	-	-	-	-
RYDER CUP BALLROOM PATIO	68' X 46'	3,218	-	-	-	320	200	-	-	-
RYDER CUP BALLROOM EVENT LAWN	-	9,787	-	-	-	980	600	-	-	-
<b>WANAMAHER BALLROOM</b>	<b>142' X 81'</b>	<b>11,564</b>	<b>24'</b>	<b>960</b>	<b>600</b>	<b>1,155</b>	<b>650</b>	-	-	-
WANAMAHER BALLROOM C	47' X 25'	1,159	24'	100	50	115	60	22	24	28
WANAMAHER BALLROOM B	47' X 28'	1,303	24'	110	60	130	70	24	27	32
WANAMAHER BALLROOM A	47' X 28'	1,303	24'	110	60	130	70	24	27	32
WANAMAHER BALLROOM D	82' X 50'	4,048	24'	350	180	400	220	-	-	-
WANAMAHER BALLROOM E	47' X 25'	1,155	24'	100	50	115	60	22	24	28
WANAMAHER BALLROOM F	47' X 28'	1,298	24'	110	60	130	70	24	27	32
WANAMAHER BALLROOM G	47' X 28'	1,298	24'	110	60	130	70	24	27	32
WANAMAHER BALLROOM PREFUNCTION	-	9,552	15'	-	-	955	-	-	-	-
PREFUNCTION WEST	182' X 21'	4,648	15'	-	-	465	-	-	-	-
PREFUNCTION SOUTH	131' X 24'	2,851	15'	-	-	285	-	-	-	-
PREFUNCTION NORTH	85' X 22'	2,053	10' 6"	-	-	205	-	-	-	-
WANAMAHER BALLROOM SOUTH PATIO	61' X 42'	2,540	-	-	-	255	160	-	-	-
WANAMAHER BALLROOM WEST PATIO	56' X 51'	2,854	-	-	-	285	180	-	-	-
WANAMAHER BALLROOM EVENT LAWN	-	5,212	-	-	-	520	330	-	-	-
PENICK	46' X 28'	1,292	9' 6"	110	60	130	70	22	28	32
<b>LOBBY LEVEL</b>										
PALMER	84' X 50'	4,163	13'	350	180	415	220	-	-	-
PALMER A	50' X 29'	1,422	13'	120	70	140	80	26	32	36
PALMER B	50' X 29'	1,410	13'	120	70	140	80	26	32	36
PALMER C	50' X 27'	1,331	13'	110	60	130	70	24	28	32
MARSHALL	33' X 22'	706	9'	60	25	70	40	14	15	16
ELDER	57' X 50'	2,796	13'	240	130	280	170	-	-	-
ELDER A	50' X 28'	1,398	13'	120	65	140	80	26	32	36
ELDER B	50' X 28'	1,398	13'	120	65	140	80	26	32	36
WADKINS	57' X 50'	2,796	13'	240	130	280	170	-	-	-
WADKINS A	50' X 28'	1,398	13'	120	65	140	80	26	32	36
WADKINS B	50' X 28'	1,398	13'	120	65	140	80	26	32	36
TREVINO	34' X 27'	842	13'	70	30	85	40	16	18	20
SUTTON	34' X 27'	841	13'	70	30	85	40	16	18	20
NELSON	34' X 27'	845	13'	70	30	85	40	16	18	20
HOGAN	34' X 27'	844	13'	70	30	85	40	16	18	20
KITE	31' X 25'	723	13'	60	25	75	40	12	15	16
CRENSHAW	26' X 21'	505	12'	40	20	50	30	12	14	16
WORCESTER	24' X 22'	524	13'	-	-	-	-	12	-	-
<b>SIXTH LEVEL</b>										
WHITWORTH	47' X 29'	1,286	9' 4"	110	60	130	70	22	28	32
RAWLS	33' X 25'	833	9' 4"	70	30	80	40	16	18	20
ZAHARIAS	33' X 22'	721	9' 4"	60	25	70	40	12	15	16
<b>PANTHER CREEK PAVILION</b>	<b>106' X 47'</b>	<b>4,961</b>	<b>13' 6"</b>	<b>410</b>	<b>-</b>	<b>500</b>	<b>300</b>	<b>-</b>	<b>-</b>	<b>-</b>
PAVILION PATIO	-	8,979	-	-	-	900	-	-	-	-
PAVILION EVENT LAWN	-	10,484	-	410	-	500	300	-	-	-

Meeting room capacities were determined by the use of the "Hotel Planner Banquet Space Calculator" using 60" rounds of 10, three chairs per 6'x30" table (U-Shape and Conference capacity) and three chairs per 6'x18" table (Classroom capacity) allowing for minimal audiovisual equipment. Ballroom/meeting room square footage, capacities and dimensions are subject to change.



## FRISCO HIGHLIGHTS

### ARTS & CULTURE

Frisco Discovery Center  
Texas Sculpture Garden  
Heritage Museum  
Public Art  
Museum of the American Railroad  
National Videogame Museum

### DINING

Cane Rosso  
City Works Eatery & Pour House  
Concrete Cowboy  
Cowboys Club  
Dee Lincoln Prime  
Howard Wang's  
China Grill  
Mi Cocina  
Neighborhood Services  
The Common Table  
Trophy Park  
Tupelo Honey

### SPORTS & RECREATION

Cowboys Fit  
Dr Pepper Arena  
Dr Pepper Star Center  
Dr Pepper Ballpark  
iFLY Dallas  
Lincoln Experience Center  
Nike Experience  
The Ford Center  
Toyota Stadium

### SHOPPING

Shops at The Star  
Frisco Mercantile  
Frisco Square and Main Street  
Legacy West

