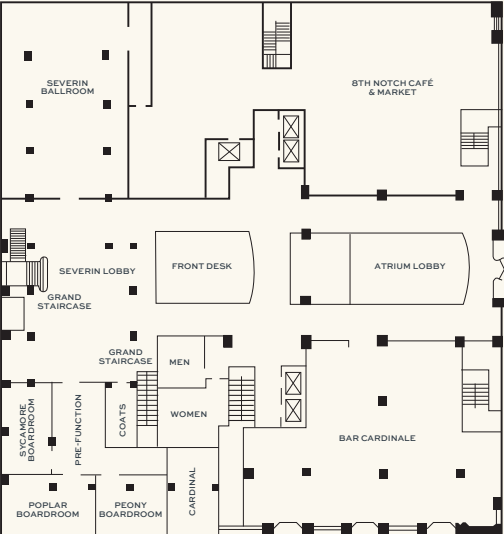
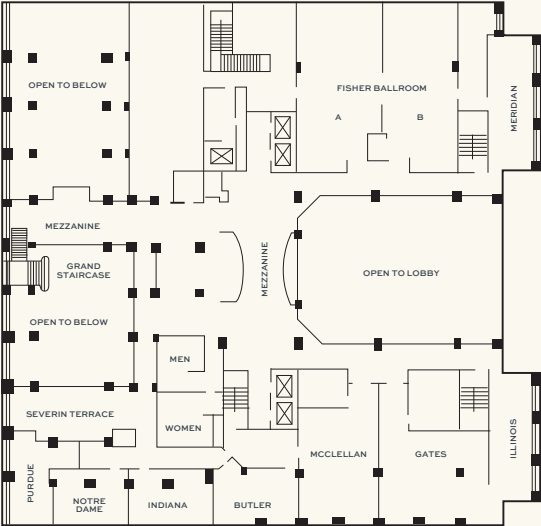


Flexible, Next Generation Event & Meeting Space.

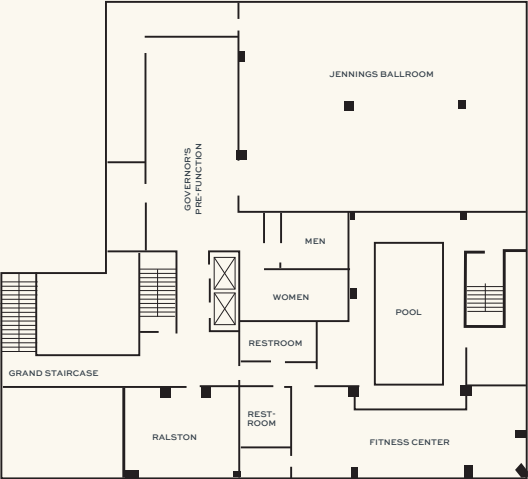
LOBBY LEVEL



MEZZANINE LEVEL



LOWER LEVEL



	SQUARE FOOTAGE	DIMENSIONS LxW	CEILING HEIGHT	PORTABLE WALLS	THEATER	CLASSROOM 18"	BANQUET 60" 72"	RECEPTION	HOLLOW SQUARE	EXHIBITS 8x10 10x10		
LOWER LEVEL												
JENNINGS BALLROOM	3,036	46' x 66'	12'	—	250	150	248 200	316	50	18 15		
GOVERNOR'S PRE-FUNCTION	—	—	—	—	—	—	—	100	—	8 4		
RALSTON	620	20' x 31'	9'	—	30	25	40 30	50	14	6 4		
LOBBY LEVEL												
SEVERIN BALLROOM	2,440	40' x 61'	15'	—	130	100	200 150	253	55	15 12		
SYCAMORE BOARDROOM	405	15' x 27'	9'	—	30	15	30 30	40	12	7 5		
POPLAR BOARDROOM	522	18' x 29'	9'	—	—	—	—	—	—	—		
PEONY BOARDROOM	414	18' x 23'	9'	—	—	—	—	—	—	—		
CARDINAL BOARDROOM	432	16' x 27'	9'	—	—	30	30 30	—	12	7 5		
MAZZANINE LEVEL												
FISHER BALLROOM	2,438	46' x 53'	11'	Yes	250	150	180 140	263	60	15 12		
FISHER A	1,219	23' x 53'	11'	Yes	120	50	90 70	132	30	15 10		
FISHER B	1,219	23' x 53'	11'	Yes	120	50	90 70	132	30	15 10		
GATES	1,116	31' x 36'	9'	—	100	75	80 60	75	30	10 6		
MCCLELLAN	1,014	26' x 39'	9'	—	100	72	80 70	75	26	10 6		
ILLINOIS	640	16' x 40'	9'	—	50	25	35 35	50	10	10 8		
MERIDIAN	640	16' x 40'	9'	—	50	25	35 35	50	12	10 8		
BUTLER	513	19' x 27'	9'	—	35	15	20 20	40	14	6 5		
INDIANA	513	19' x 27'	9'	—	35	15	20 20	40	14	6 3		
NOTRE DAME	450	18' x 25'	9'	—	35	15	20 20	40	12	6 5		
PURDUE	435	15' x 29'	9'	—	35	15	20 20	40	12	6 5		

MEETING ROOM CAPACITIES WERE DETERMINED USING 72" ROUNDS OF 10 (ROUNDS CAPACITY), THREE CHAIRS PER 6'x30" TABLE (U-SHAPE CAPACITY) AND THREE CHAIRS PER 6'x18" TABLE (CLASSROOM CAPACITY) ALLOWING FOR MINIMAL AUDIOVISUAL EQUIPMENT.