

Meetings & Event Guide.

OMNI ORLANDO RESORT
AT CHAMPIONSGATE

EXPERIENCES MATTER HERE



OMNI

ORLANDO
AT CHAMPIONSGATE

Table *of* Contents

| | |
|----------------------------------|----|
| MEETINGS & EVENTS OVERVIEW | 01 |
| ABOUT..... | 02 |
| EVENT VENUES | 04 |
| HIGHLIGHTS..... | 10 |



An enchanting ORLANDO DESTINATION.

An enchanting Orlando destination spread across 800 acres of lush palms and sparkling water. Four Diamond-rated Omni Orlando Resort at ChampionsGate is the ideal retreat for your next meeting or event. With 1,005 total guestrooms and suites, including the adjacent Villas at ChampionsGate Championsgate and Sunset Lodge and Suites, each guest can enjoy spacious accommodations convenient to our beautiful meeting facilities.

After business is concluded, your guests will love relaxing by one of our six pools, swinging into world-class golf, pampering themselves at Mokara Spa or venturing into the magic of nearby attractions like Walt Disney World®, Universal Orlando Resort® or SeaWorld. And that's just the start—Orlando's entire playground awaits their exploration and enjoyment.



about
Omni Orlando Resort
at ChampionsGate.

**WORK, PLAY, AND CELEBRATE
AT OMNI ORLANDO RESORT AT CHAMPIONSGATE**

Omni Orlando Resort at ChampionsGate is a destination designed for all. Featuring 1,005 guest rooms and over 255,000 square feet of versatile event space, your event is destined for success. Elevate your experience further with two championship golf courses and Eagles Edge at ChampionsGate, an exciting new Toptracer range featuring 30 hitting bays and event space. Indulge in a diverse culinary journey through ten unique restaurants. Dive into leisure with our expansive pools, thrilling water slides and Orlando's only resort wave pool. Our resort is a haven where every guest discovers their perfect escape.





An event to remember

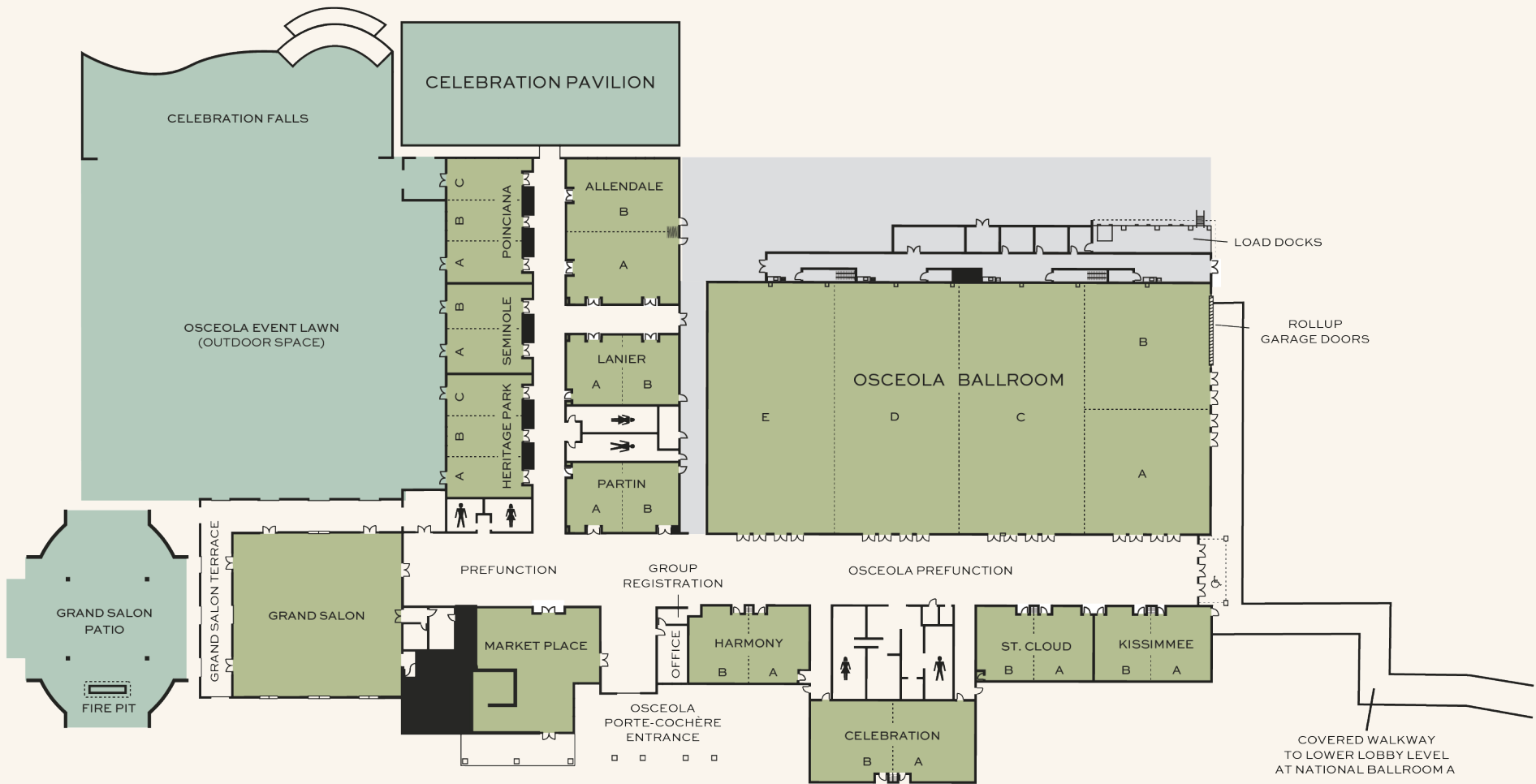
- 1,005 guest rooms, suites and villas
- Over 255,000 square feet of flexible indoor and outdoor meeting, event, and pre-function space across 69 rooms, including three large ballrooms, poolside event options, covered outdoor pavilion and three large event lawns
- Fast Wi-Fi, the latest AV technology and helpful professional services
- Two championship 18-hole golf courses: the European-style International Course and the American-style National Course. Plus a lighted par 3 course, miniature golf course with 18 unique holes and Eagles Edge at ChampionsGate, a Toptracer golf venue
- Experience our array of ten unique dining venues, from David's Club, combining upscale steakhouse dining with a vibrant sports bar, to Zen's Asian-fusion cuisine and sushi bar. Enjoy the flavors of Italy at Trevi's, offering indoor and outdoor seating and savor regional ingredients and refreshing cocktails at Croc's Pool Bar & Grill
- From expansive pools and a lazy river to water slides, hot tubs and Orlando's only resort wave pool, our resort is a perfect destination for every guest to unwind
- Experience spa luxury at Mokara Spa, which offers a selection of serene treatments such as massages, facials, manicures and pedicures for an unparalleled spa experience
- Our 24-hour complimentary full-service fitness center, equipped with treadmills, bikes, ellipticals and Peloton® bikes—is designed to ensure your attendees feel supported and energized throughout their visit

Flexible, Next Generation Event & Meeting Space.

| | SQUARE FOOTAGE | DIMENSIONS L x W | CEILING HEIGHT | WINDOWS | THEATRE STYLE | CLASSROOM 18" TABLE | CRESCENT 72" ROUND | BANQUET 72" ROUND | RECEPTION | EXHIBITS 8' X 10' | EXHIBITS 10' X 10' | CONFERENCE | U-SHAPE | HOLLOW SQUARE |
|---|----------------|------------------|----------------|---------|---------------|---------------------|-------------------------|-------------------|-----------|-------------------|--------------------|------------|---------|---------------|
| OSCEOLA COUNTY CONFERENCE CENTER | | | | | | | | | | | | | | |
| OSCEOLA BALLROOM | 28,800 | 240' X 120' | 18' | NO | 3,200 | 2,000 | 1,400 | 2,000 | 3,000 | 180 | 150 | — | — | — |
| A, B (INDIVIDUALLY) | 3,600 | 60' X 60' | 18' | NO | 400 | 250 | 175 | 250 | 360 | 25 | 20 | 120 | 100 | 85 |
| A, B (COMBINED) | 7,200 | 60' X 120' | 18' | NO | 800 | 500 | 350 | 500 | 720 | 45 | 35 | 240 | 200 | 175 |
| A, B, C, D | 21,600 | 120' X 180' | 18' | NO | 2,400 | 1,500 | 1,050 | 1,500 | 2,200 | 135 | 110 | — | — | — |
| C, D, E (INDIVIDUALLY) | 7,200 | 60' X 120' | 18' | NO | 800 | 500 | 350 | 500 | 720 | 45 | 35 | 240 | 200 | 175 |
| C, D, E (ANY TWO SECTIONS) | 14,400 | 120' X 120' | 18' | NO | 1,600 | 1,000 | 700 | 1,000 | 1,500 | 90 | 70 | — | — | — |
| C, D, E (ANY THREE SECTIONS) | 21,600 | 120' X 180' | 18' | NO | 2,400 | 1,500 | 1,050 | 1,500 | 2,200 | 135 | 110 | — | — | — |
| PREFUNCTION | 9,427 | 228' X 32' | 16' | YES | — | — | — | — | 850 | — | — | — | — | — |
| KISSIMMEE | 1,944 | 60' X 38'5" | 13' | YES | 220 | 80 | 84 | 170 | 195 | 12 | 10 | 65 | 60 | 50 |
| A, B (INDIVIDUALLY) | 972 | 30' X 38'5" | 13' | YES | 110 | 40 | 42 | 80 | 100 | 6 | 5 | 30 | 30 | 25 |
| ST. CLOUD | 1,944 | 60' X 38'5" | 13' | YES | 220 | 80 | 84 | 170 | 195 | 12 | 10 | 65 | 60 | 50 |
| A, B (INDIVIDUALLY) | 972 | 30' X 38'5" | 13' | YES | 110 | 40 | 42 | 80 | 100 | 6 | 5 | 30 | 30 | 25 |
| CELEBRATION | 2,921 | 61' X 43' | 16' | YES | 330 | 120 | 140 | 250 | 300 | 18 | 15 | 100 | 90 | 75 |
| A, B (INDIVIDUALLY) | 1,460 | 30'5" X 43' | 16' | YES | 165 | 60 | 70 | 120 | 150 | 9 | 10 | 50 | 40 | 35 |
| HARMONY | 1,944 | 60' X 38'5" | 13' | YES | 220 | 80 | 84 | 160 | 195 | 12 | 10 | 65 | 60 | 50 |
| A, B (INDIVIDUALLY) | 972 | 30' X 38'5" | 13' | YES | 110 | 40 | 42 | 60 | 100 | 6 | 5 | 30 | 30 | 25 |
| ALLEDALE | 3,850 | 55' X 70' | 12' | YES | 455 | 216 | 168 | 240 | 300 | 21 | 21 | 54 | 63 | 78 |
| A, B (INDIVIDUALLY) | 1,925 | 55' X 35' | 12' | YES | 168 | 120 | 84 | 120 | 150 | 10 | 10 | 42 | 45 | 54 |
| HERITAGE PARK | 2,460 | 41' X 60' | 12' | YES | 243 | 144 | 126 | 150 | 200 | — | — | 48 | 54 | 60 |
| A, B, C (INDIVIDUALLY) | 820 | 41' X 20' | 12' | YES | 71 | 49 | 42 | 30 | 40 | — | — | 24 | 24 | 36 |
| A, B, C (ANY TWO SECTIONS) | 1,640 | 41' X 40' | 12' | YES | 163 | 108 | 84 | 80 | 100 | — | — | 32 | 27 | 44 |
| LANIER | 1,904 | 34' X 56' | 12' | NO | 191 | 129 | 84 | 130 | 100 | — | — | 48 | 48 | 54 |
| A, B (INDIVIDUALLY) | 952 | 34' X 28' | 12' | NO | 108 | 75 | 42 | 60 | 75 | — | — | 24 | 30 | 30 |
| SEMINOLE | 1,806 | 42' X 43' | 12' | YES | 216 | 126 | 84 | 120 | 175 | — | — | 40 | 42 | 48 |
| A, B (INDIVIDUALLY) | 903 | 21' X 43' | 12' | YES | 108 | 63 | 42 | 60 | 75 | — | — | 32 | 32 | 42 |
| POINCIANA | 2,460 | 41' X 60' | 12' | YES | 243 | 126 | 126 | 150 | 200 | — | — | 48 | 54 | 60 |
| A, B, C (INDIVIDUALLY) | 820 | 41' X 20' | 12' | YES | 45 | 42 | 42 | 30 | 40 | — | — | 24 | 24 | 36 |
| A, B, C (ANY TWO SECTIONS) | 1,640 | 41' X 40' | 12' | YES | 144 | 84 | 84 | 80 | 100 | — | — | 32 | 27 | 44 |
| PARTIN | 1,904 | 34' X 56' | 12' | NO | 154 | 102 | 84 | 100 | 100 | — | — | 40 | 45 | 48 |
| A, B (INDIVIDUALLY) | 952 | 34' X 28' | 12' | NO | 84 | 50 | 42 | 50 | 75 | — | — | 24 | 27 | 36 |
| GRAND SALON | 6,480 | 80' X 81' | 16'7" | YES | 800 | 400 | 294 | 430 | 500 | — | — | 66 | 81 | 102 |
| TERRACE | 5,000 | 80' X 72' | — | — | — | — | — | 200 | 300 | — | — | — | — | — |
| PATIO | 8,246 | 108' X 90' | — | — | — | — | 480 | — | 550 | — | — | — | — | — |
| OSCEOLA EVENT LAWN AND FLEX LAWN | 33,300 | 185' X 180' | — | — | — | — | — | 1,540 | 1,800 | — | — | — | — | — |
| MARKET PLACE | 2,200 | — | — | — | — | — | — | — | 150 | — | — | — | — | — |
| CELEBRATION FALLS | 7,800 | 150' X 52' | — | — | — | — | — | 240 | 350 | — | — | — | — | — |
| CELEBRATION PAVILION | 7,590 | 66' X 115' | — | YES | 850 | 550 | 315 (CRESCENTS OF 7) | 450 | 550 | 50 | 40 | — | — | — |

Meeting Room Capacities Were Determined Using 72" Rounds Of 10 (Rounds Capacity), Three Chairs Per 6'X30" Table (U-Shape Capacity) And Three Chairs Per 6'X18" Table (Classroom Capacity) Allowing For Minimal Audiovisual Equipment.

Osceola County Conference Center.

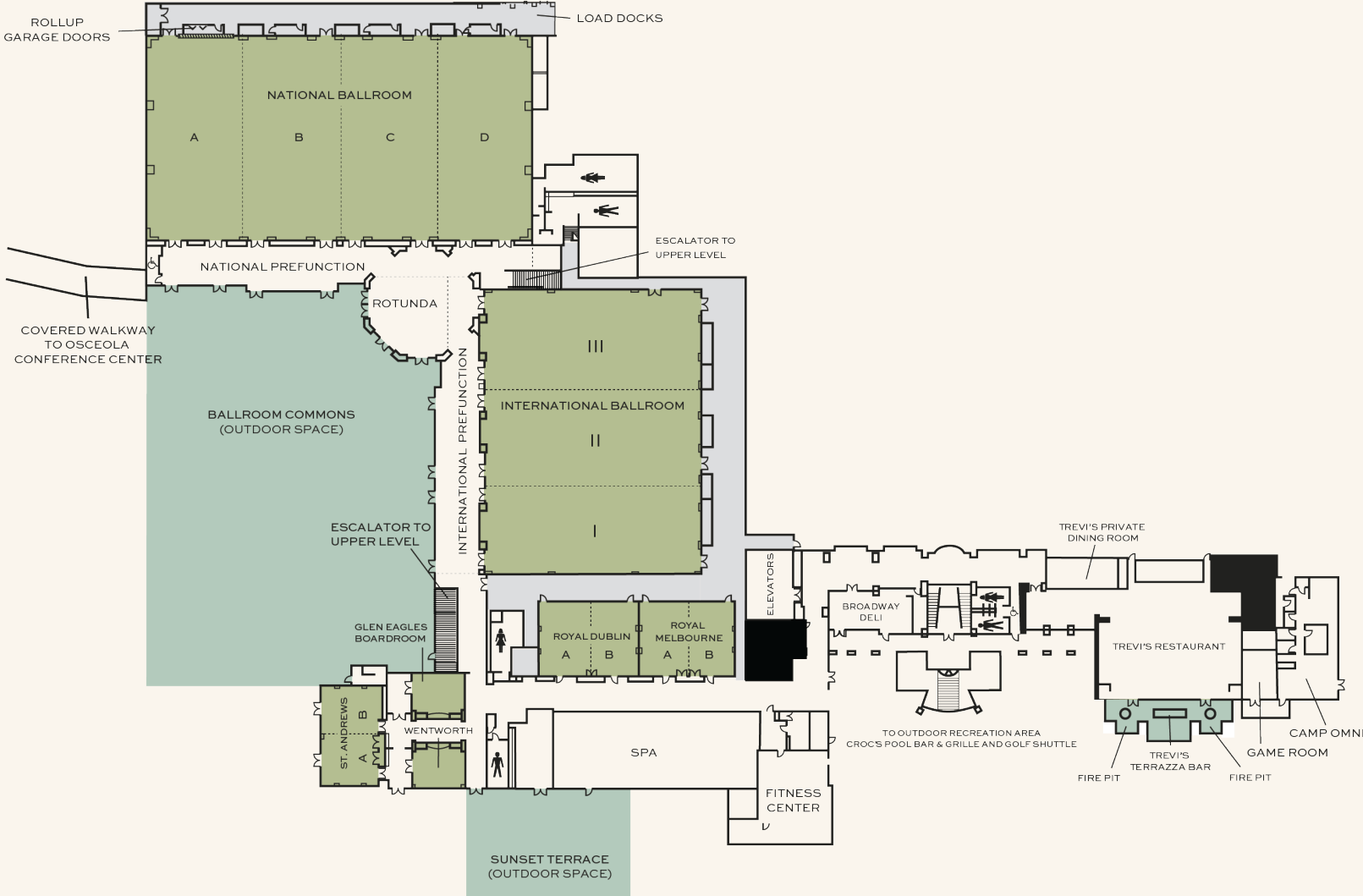


Flexible, Next Generation Event & Meeting Space.

| | SQUARE FOOTAGE | DIMENSIONS L x W | CEILING HEIGHT | WINDOWS | THEATRE STYLE | CLASSROOM 18" TABLE | CRESCENT 72" ROUND | BANQUET 72" ROUND | RECEPTION | EXHIBITS 8' X 10' | EXHIBITS 10' X 10' | CONFERENCE | U-SHAPE | HOLLOW SQUARE |
|--|---------------------------|------------------|----------------|---------|---------------|---------------------|--------------------|-------------------|-----------|-------------------|--------------------|------------|---------|---------------|
| LOWER LOBBY LEVEL | | | | | | | | | | | | | | |
| NATIONAL BALLROOM | 24,631 | 215'5" X 114'3" | 20' | NO | 2,600 | 1,500 | 1,120 | 1,600 | 2,600 | 156 | 125 | — | — | — |
| A, B, C, D (INDIVIDUALLY) | 6,157 | 53' X 114'3" | 20' | NO | 650 | 400 | 280 | 400 | 650 | 40 | 32 | — | — | — |
| A, B, C, D (ANY TWO SECTIONS) | 12,314 | 106' X 114'3" | 20' | NO | 1,350 | 800 | 560 | 800 | 1,350 | 80 | 64 | — | — | — |
| A, B, C, D (ANY THREE SECTIONS) | 18,471 | 159' X 114'3" | 20' | NO | 2,000 | 950 | 840 | 1,200 | 2,000 | 120 | 96 | — | — | — |
| NATIONAL PRE-FUNCTION | 4,600 | 200' X 23' | 14' | YES | — | — | — | — | 480 | — | — | — | — | — |
| INTERNATIONAL BALLROOM | 19,315 | 121'4" X 159'11" | 20' | NO | 2,000 | 1,150 | 945 | 1,350 | 2,000 | 121 | 97 | — | — | — |
| I, II, III (INDIVIDUALLY) | 6,438 | 121'4" X 53' | 20' | NO | 725 | 425 | 315 | 450 | 725 | 41 | 33 | — | — | — |
| I, II, III (ANY TWO SECTIONS) | 12,876 | 121'4" X 106' | 20' | NO | 1,375 | 850 | 630 | 900 | 1,375 | 82 | 66 | — | — | — |
| INTERNATIONAL PRE-FUNCTION | 3,749 | 163' X 23' | 14' | YES | — | — | — | — | 380 | — | — | — | — | — |
| ROTUNDA | 1,617 | 44' X 42' | 18' | YES | — | — | — | — | 250 | — | — | — | — | — |
| BALLROOM COMMONS OUTDOOR AREA | 16,200 | — | — | — | — | — | — | 680 | 1,200 | — | — | — | — | — |
| WENTWORTH | 588 | 28' X 21' | 12' | YES | 50 | 32 | 21 | 30 | 40 | — | — | 20 | 20 | 24 |
| ST. ANDREWS | 1,685 | 31'2" X 54' | 12' | YES | 140 | 100 | 70 | 100 | 140 | — | — | 36 | 40 | 48 |
| A, B (INDIVIDUALLY) | 842 | 31'2" X 27' | 12' | YES | 70 | 50 | 35 | 50 | 70 | — | — | 18 | 20 | 24 |
| GLEN EAGLES BOARDROOM | 569 | 26'7" X 21'3" | 12' | YES | — | — | — | — | — | — | — | 12 | — | — |
| ROYAL DUBLIN | 2,111 | 52'9" X 39'9" | 12' | NO | 200 | 120 | 84 | 120 | 160 | — | — | 44 | 48 | 56 |
| A, B (INDIVIDUALLY) | 1,055 | 26'4" X 39'9" | 12' | NO | 100 | 60 | 42 | 60 | 80 | — | — | 22 | 24 | 28 |
| ROYAL MELBOURNE | 2,035 | 51' X 39'9" | 12' | NO | 200 | 120 | 84 | 120 | 160 | — | — | 44 | 48 | 56 |
| A, B (INDIVIDUALLY) | 1,017 | 25'6" X 39'9" | 12' | NO | 100 | 60 | 42 | 60 | 80 | — | — | 22 | 24 | 28 |
| MEETING SUITES 1-5 (EACH) LOCATED ON LEVEL 2 OF GUEST ROOMS | 884 | 17' X 52' | 9' | YES | 40 | 30 | 28 | 40 | 35 | — | — | 20 | 20 | 18 |
| SUNSET TERRACE OUTDOOR PATIO | 9,906 | 125' 5" X 79' | — | — | — | — | — | 550 | 700 | — | — | — | — | — |
| OTHER INDOOR AND OUTDOOR FUNCTION SPACE | | | | | | | | | | | | | | |
| CHAMPIONS HALL CHAMPIONSGATE GOLF CLUB | 2,516 | 68'4" x 37'2" | — | YES | 220 | 171 | — | 150 | 200 | 15 | 12 | — | — | — |
| ADULT POOL | 3,500 | — | — | — | — | — | — | — | 200 | — | — | — | — | — |
| FAMILY POOL | 7,500 | — | — | — | — | — | — | — | 500 | — | — | — | — | — |
| WAVE POOL | 3,500 | — | — | — | — | — | — | — | 200 | — | — | — | — | — |
| KID'S POOL AREA | 4,500 | — | — | — | — | — | — | — | 400 | — | — | — | — | — |
| FIRE PIT | 750 | — | — | — | — | — | — | — | 75 | — | — | — | — | — |
| TREVI'S TERRAZZA | 1,500 | — | — | — | — | — | — | 50 | 75 | — | — | — | — | — |
| EAGLES EDGE AT CHAMPIONSGATE | 18,474 (INCLUDES BAYS) | — | — | — | — | — | — | — | — | — | — | — | — | — |

Meeting Room Capacities Were Determined Using 72" Rounds Of 10 (Rounds Capacity), Three Chairs Per 6'X30" Table (U-Shape Capacity) And Three Chairs Per 6'X18" Table (Classroom Capacity) Allowing For Minimal Audiovisual Equipment.

Lower Lobby Level.

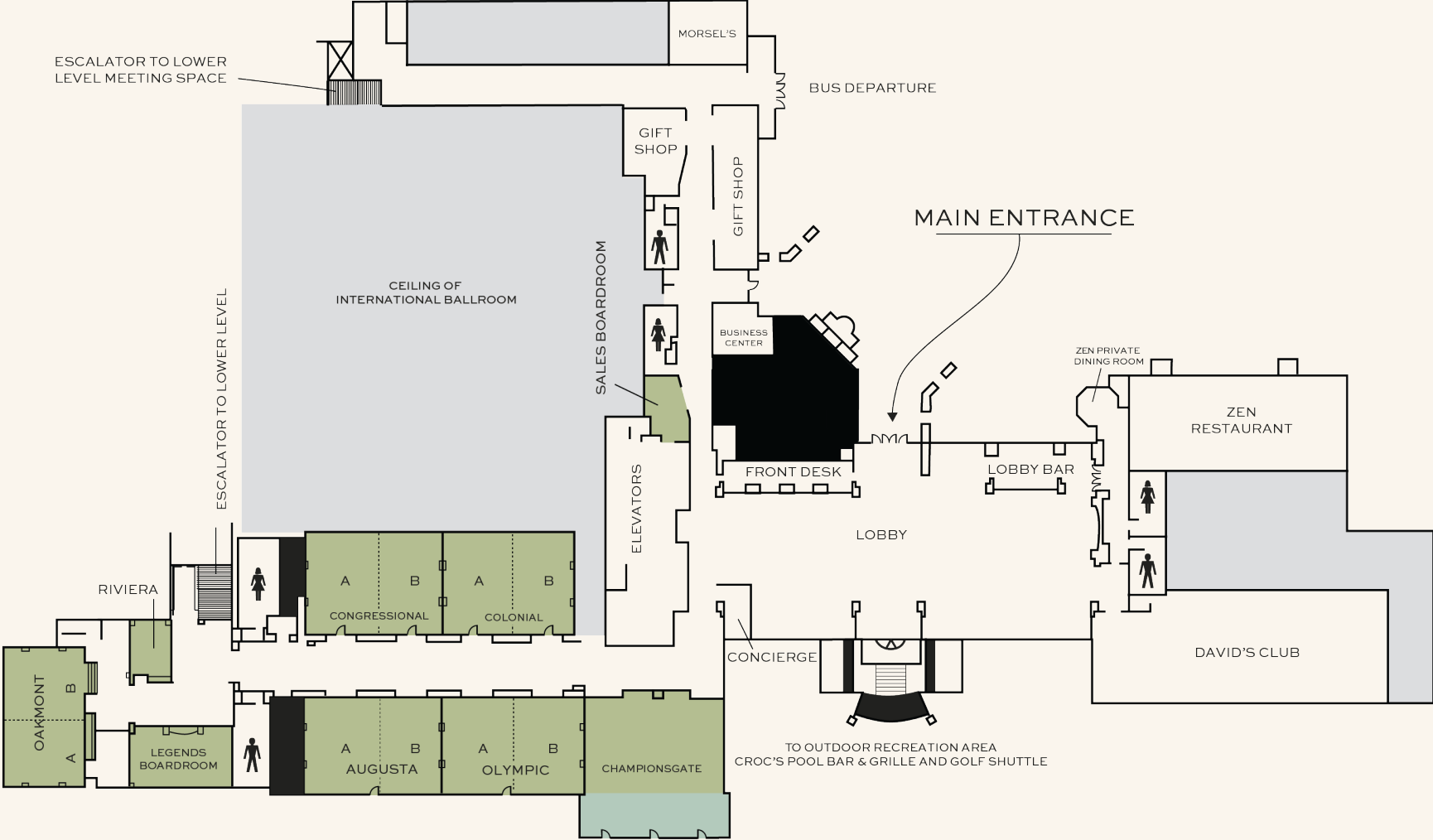


Flexible, Next Generation Event & Meeting Space.

| | SQUARE FOOTAGE | DIMENSIONS L x W | CEILING HEIGHT | WINDOWS | THEATRE STYLE | CLASSROOM 18" TABLE | CRESCENT 72" ROUND | BANQUET 72" ROUND | RECEPTION | EXHIBITS 8' X 10' | EXHIBITS 10' X 10' | CONFERENCE | U-SHAPE | HOLLOW SQUARE |
|---|----------------|------------------|----------------|---------|---------------|---------------------|--------------------|-------------------|-----------|-------------------|--------------------|------------|---------|---------------|
| LOBBY LEVEL | | | | | | | | | | | | | | |
| CHAMPIONSGATE WITH OUTDOOR PATIO | 2,704 | 52' X 52' | 14' | YES | 280 | 152 | 126 | 180 | 200 | — | — | 52 | 60 | 72 |
| OLYMPIC | 1,672 | 44'5" X 37'4" | 14' | YES | 140 | 90 | 70 | 100 | 120 | — | — | 36 | 40 | 48 |
| A, B (INDIVIDUALLY) | 836 | 22'2" X 37'4" | 14' | YES | 70 | 45 | 35 | 50 | 60 | — | — | 18 | 20 | 24 |
| AUGUSTA | 2,008 | 54'3" X 37'4" | 14' | YES | 200 | 120 | 91 | 130 | 160 | — | — | 44 | 48 | 56 |
| A, B (INDIVIDUALLY) | 1,004 | 26'3.5" X 37'4" | 14' | YES | 100 | 60 | 42 | 60 | 80 | — | — | 22 | 24 | 28 |
| LEGENDS BOARDROOM | 974 | 40'1" X 24'3" | 14' | YES | — | — | — | — | — | — | — | 18 | — | — |
| OAKMONT | 1,685 | 31'2" X 54' | 14' | YES | 140 | 100 | 70 | 100 | 140 | — | — | 36 | 40 | 48 |
| A, B (INDIVIDUALLY) | 842 | 31'2" X 27' | 14' | YES | 70 | 50 | 35 | 50 | 70 | — | — | 18 | 20 | 24 |
| RIVIERA | 330 | 15' X 23' | 14' | YES | 20 | — | — | — | — | — | — | 10 | — | — |
| CONGRESSIONAL | 2,035 | 51' X 39'9" | 14' | NO | 200 | 120 | 91 | 130 | — | — | — | — | — | — |
| A, B (INDIVIDUALLY) | 1,017 | 25'6" X 39'9" | 14' | NO | 100 | 60 | 42 | 60 | 80 | — | — | 22 | 24 | 48 |
| COLONIAL | 2,035 | 51' X 39'9" | 14' | NO | 200 | 120 | 91 | 130 | 160 | — | — | 44 | 48 | 56 |
| A, B (INDIVIDUALLY) | 1,017 | 25'6" X 39'9" | 14' | NO | 100 | 60 | 42 | 60 | 80 | — | — | 22 | 24 | 28 |
| PRE-FUNCTION | 4,322 | — | — | — | — | — | — | — | 150 | — | — | — | — | — |
| SALES BOARDROOM | 300 | — | — | — | — | — | — | — | — | — | — | 6 | — | — |

Meeting Room Capacities Were Determined Using 72" Rounds Of 10 (Rounds Capacity), Three Chairs Per 6'X30" Table (U-Shape Capacity) And Three Chairs Per 6'X18" Table (Classroom Capacity) Allowing For Minimal Audiovisual Equipment.

Lobby Level.





Orlando

highlights.

Home to world-renowned theme parks like Walt Disney World®, Universal Orlando Resort® and SeaWorld, Orlando is a captivating destination. Beyond the parks, Orlando buzzes with a vibrant art scene, popular shopping districts, and lush trails. From thrilling entertainment to natural wonders, you'll find it all and more in Orlando.

OMNI ORLANDO AT CHAMPIONSGATE
1500 MASTERS BOULEVARD
CHAMPIONSGATE, FLORIDA 33896
407.238.6526
OMNIHOTELS.COM/ORLANDO

AIRPORTS

Orlando International Airport | 27 mi

ATTRACTIONS

- Walt Disney World® Resort | 11 mi
- Disney Springs® | 10 mi
- ICON Park | 18 mi
- SeaWorld Orlando | 16 mi
- Universal Studios Florida | 19 mi

ARTS & CULTURE

- Harry P. Leu Gardens | 30 mi
- Orlando Museum of Art | 29 mi
- Morse Museum of American Art | 36 mi





OMNI ORLANDO AT
CHAMPIONSGATE

OMNIHOTELS.COM/ORLANDO
407.238.6526