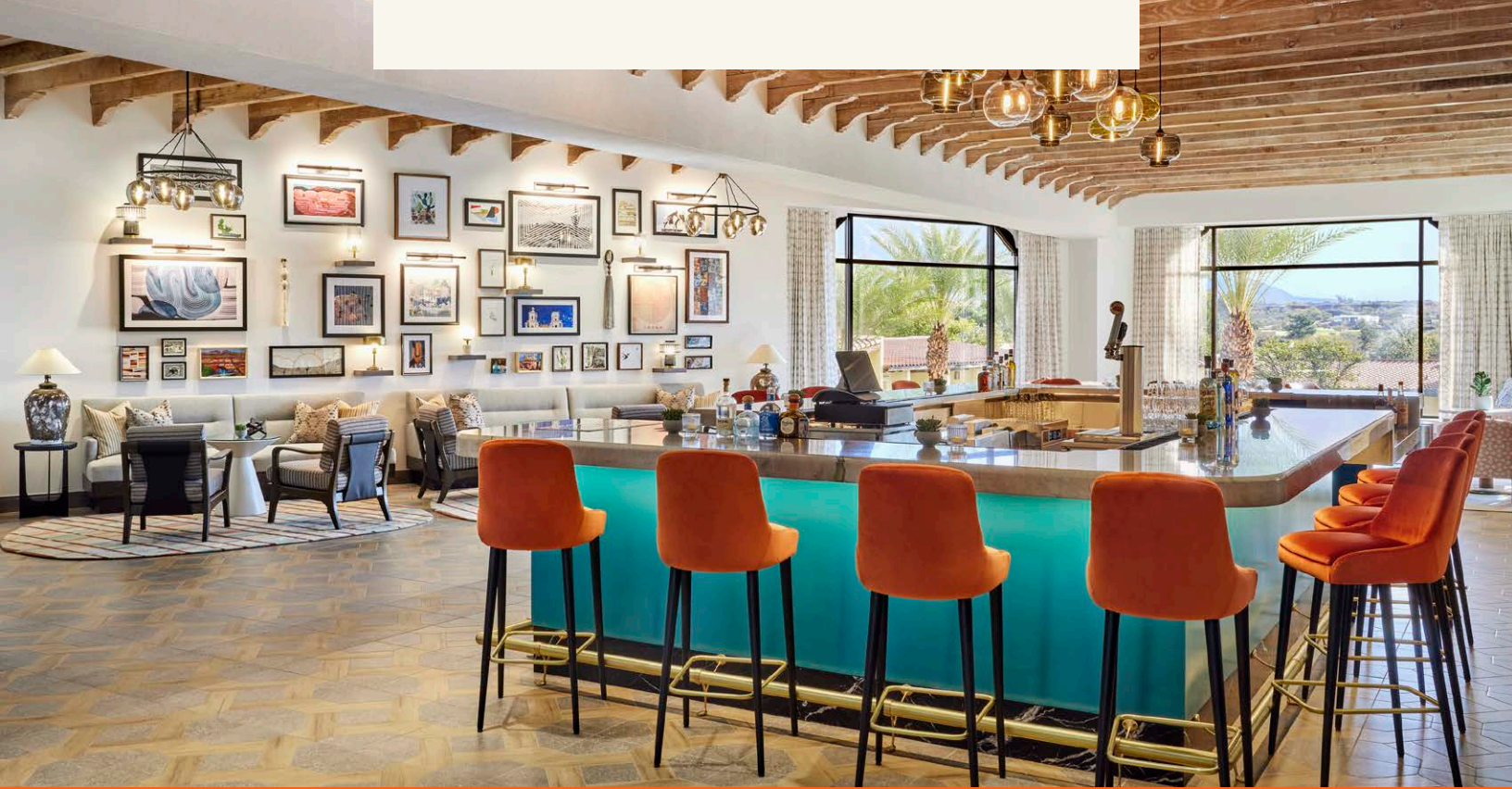




Resort Guide.



Activities.



WINE DOWN WEDNESDAY

WEDNESDAYS FROM 5 P.M. - 7 P.M.
LEGENDS BAR & GRILL

Unwind at Legends Bar & Grill with \$6 select wines-by-the-glass and enjoy beautiful sunset views of the Catalina Mountains.

COCKTAIL CLASS

THURSDAY FROM 4:30 P.M. - 6 P.M. | THE PEAK

Learn about the history of a new featured cocktail each week followed by the preparation and garnishing. Each guest will receive a total of four cocktails.

SUNSET TEQUILA TASTING

FRIDAY AT 4:30 P.M. | THE PEAK

Join us for a tequila tasting class that will take you on a journey through the thrilling history of tequila distillery production, education of the five types of tequilas and end with an unforgettable toast as the Catalina Mountains turn pink! We've partnered with Don Julio to feature a blanco, reposado and añejo tequila. \$30++

YAPPY HOUR

SUNDAY AT DUSK | LEGENDS BAR & GRILL PATIO

Bring your furry friend to Legends Bar & Grill for food and drink specials and some pet-friendly treats!

Dining.

SAVOR FULLY REIMAGINED CULINARY OFFERINGS WITH REGIONAL-INSPIRED CUISINE.

TERRA COTTA CAFÉ

DAILY: 6:30A.M. - 2P.M.

The all-new Terra Cotta Café is perfect for anyone on-the-go looking for a quick meal, snack, drink or souvenir. EXT. 2382

DESERT FARMER

MON - FRI: 7A.M. - 10:30A.M.

SAT - SUN: BREAKFAST: 7A.M. - 9A.M.

BRUNCH: 9A.M. - 1P.M.

Enjoy a contemporary approach to unique options for breakfast and brunch paired with inventive cocktails, wine, and beer selection. Dining available indoors or on the patio. EXT. 2224

THE PEAK

SUN - THU 4P.M. - 10P.M.

FRI - SAT 4P.M. - 11P.M.

LIVE MUSIC: FRI - SAT 7P.M. - 8P.M.

Take in the views at our all-new reimagined hotel lobby bar and lounge, featuring wines, beers, spirits and shareable plates.

EXT. 2360

LEGENDS BAR & GRILL

DAILY: 10:30A.M. - 10P.M.

Newly renovated! Indulge in our all-new menu and enjoy our wide selection of beer, wine and spirits while watching the game on our surrounding TVs or enjoy the breeze on the patio with a local brew and signature Sonoran Dog. EXT. 2378

BOB'S STEAK & CHOP HOUSE

TUE - THU 5P.M. - 9P.M.

FRI - SAT 5P.M. - 10P.M.

CLOSED SUNDAY & MONDAY

Proudly known as Tucson's one-and-only prime steakhouse, enjoy fine dining and world-class cuisine right here at the Omni Tucson National with sommelier recommended wines from our signature collection. EXT. 2377

SWEET WATER TERRACE

SAT - SUN 10A.M. - DUSK

*Hours of operation are subject to change without notice and weather permitting.

Enjoy a cocktail or small bite while relaxing at our Sweet Water Pool. EXT. 2383



Shop

GOLF PRO SHOP

DAILY: 7:00 A.M. – 5:00 P.M.

Find golf essentials, Tucson National custom apparel and more located in our Pro Golf Shop. (520) 575-7540

MOKARA SPA BOUTIQUE

OPEN DURING SPA HOURS

Discover new products and at-home wellness rituals at our all-new Mokara Salon & Spa boutique.

TERRA COTTA CAFÉ BOUTIQUE

OPEN DURING CAFÉ HOURS

From souvenirs to Sonoran Desert must-haves, the Terra Cotta Café Boutique carries all of your desert oasis essentials.

Swim

SWEET WATER POOL

DAILY: 5:00 A.M. – 10:00 P.M.

Enjoy our heated, zero-edge pool set against the backdrop of the Catalina Mountains. Relax poolside in our chaise lounges or rent our private cabanas with premium amenities. EXT. 2383

CATALINA POOL

DAILY: 5:00 A.M. – 10:00 P.M.

Take time to relax in our spacious, soothing whirlpool and immerse yourself against a modern desert setting with breathtaking views of the Santa Catalina Mountains.

Golf

CATALINA GOLF COURSE

Play on the host course of over 30 PGA Tour events! Known for its magnificent views and traditional-style layout with gentle contours and tree-lined fairways. (520) 575-7540 EXT. 1

SONORAN GOLF COURSE

Designed by 2006 Ryder Cup Captain Tom Lehman, the Sonoran offers spectacular vistas of natural beauty of the surrounding terrain. (520) 575-7540 EXT. 1.

GOLF INSTRUCTION

We offer an array of programs for players of all skill levels. EXT 2315

CATALINA ACTIVITIES CENTER

TENNIS COURT ACCESS ONLY FROM DAWN TO DUSK

From tennis to pickleball to volleyball, our activities center is perfect for light to moderate cardio and a little friendly competition. Recreation equipment checkout located at the front desk.



Wellness

MOKARA SALON & SPA

SUNDAY – THURSDAY 9:00 A.M. – 5:00 P.M.

FRIDAY – SATURDAY 9:00 A.M. – 7:00 P.M.

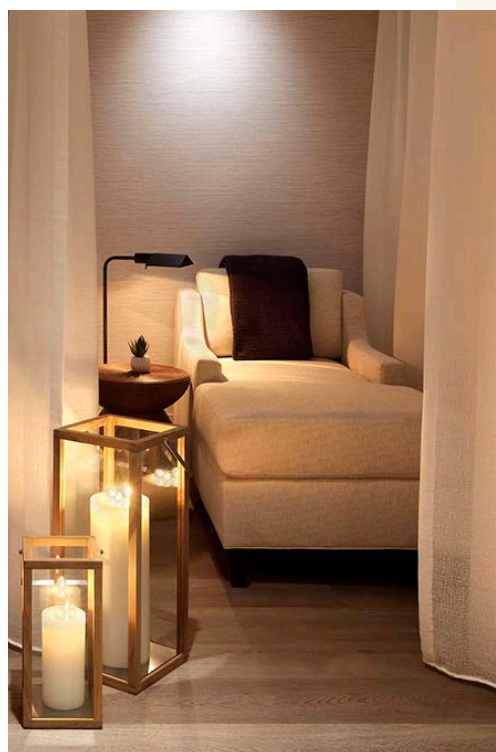
Our all-new Mokara Spa offers guests and locals alike a variety of pampering treatments, including 50- and 80-minute massages. Boutique spa accessories and products also available to rekindle your experience at home. EXT. 2367

FITNESS CENTER

OPEN 24/7

Our all-new fitness center equipment includes weight resistance, free weights, treadmills, stair steppers, ellipticals, Pelotons and more.

EXT. 4340 (EAST) EXT. 4341 (WEST)



Venturing

HORSEBACK RIDING

A leisurely ride through the scenic trails of the Sonoran Desert and mountain foothills.

SPANISH TRAIL | BY APPOINTMENT ONLY

DESERT JEEP RIDES

Experience the real Sonoran Desert from a four-wheel drive adventure. From tree-lined creeks to the majestic mountains, you'll enjoy a rugged trip in the Old West.

TRAIL DUST ADVENTURES | BY APPOINTMENT ONLY

MOUNTAIN /BIKING

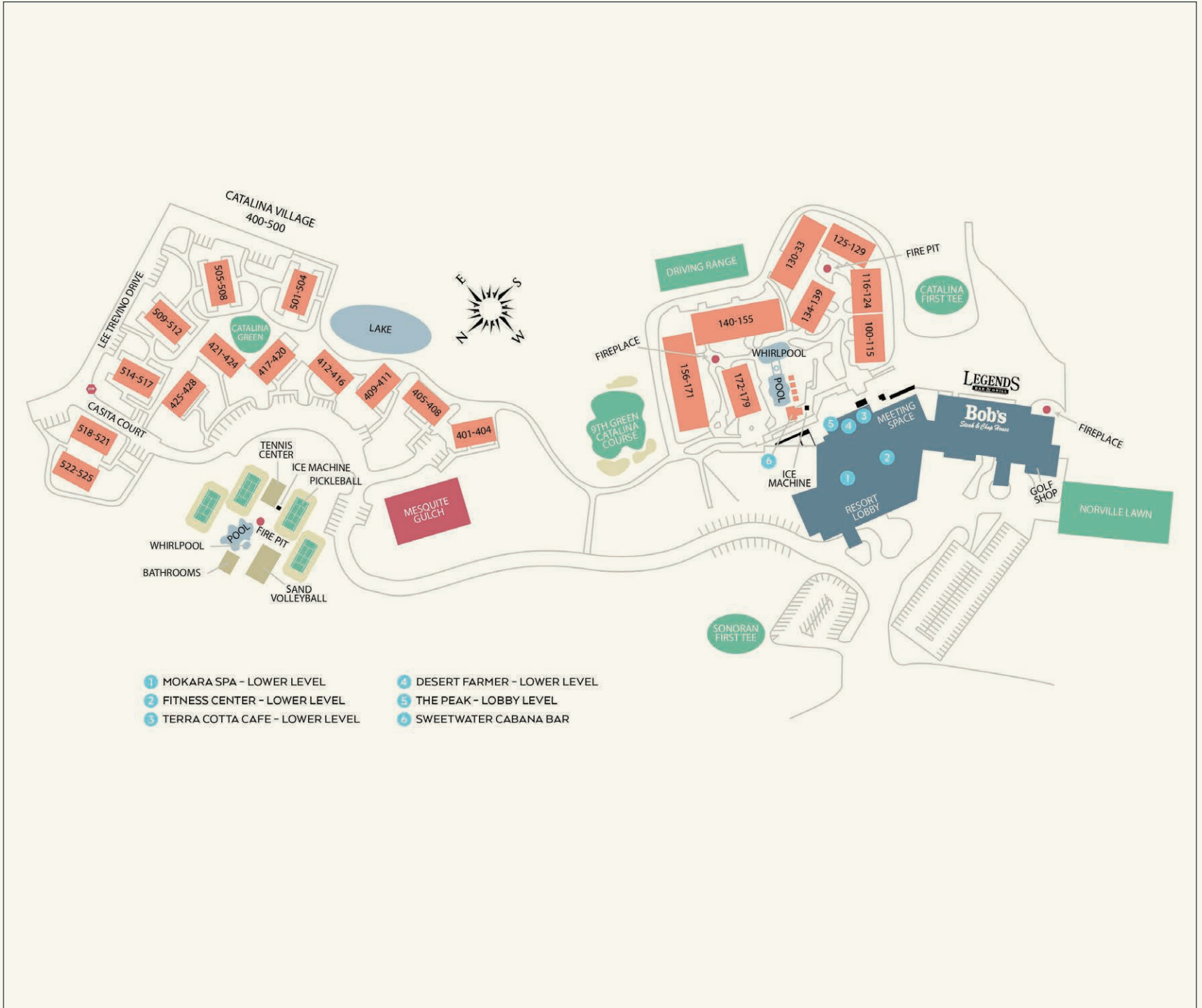
Enjoy a professionally guided biking experience to capture some views of the more remote areas of Tucson.

SOUTHWEST TREKKING | BY APPOINTMENT ONLY

JOGGING AND HIKING TRAILS

Surrounded by numerous trails, it give you a great opportunity to experience the desert at your own pace. Be sure to bring water.

SEE CONCIERGE FOR DIRECTIONS | HOURS MAY VARY



- | | |
|----------------------------------|-------------------------------|
| 1 MOKARA SPA - LOWER LEVEL | 4 DESERT FARMER - LOWER LEVEL |
| 2 FITNESS CENTER - LOWER LEVEL | 5 THE PEAK - LOBBY LEVEL |
| 3 TERRA COTTA CAFE - LOWER LEVEL | 6 SWEETWATER CABANA BAR |